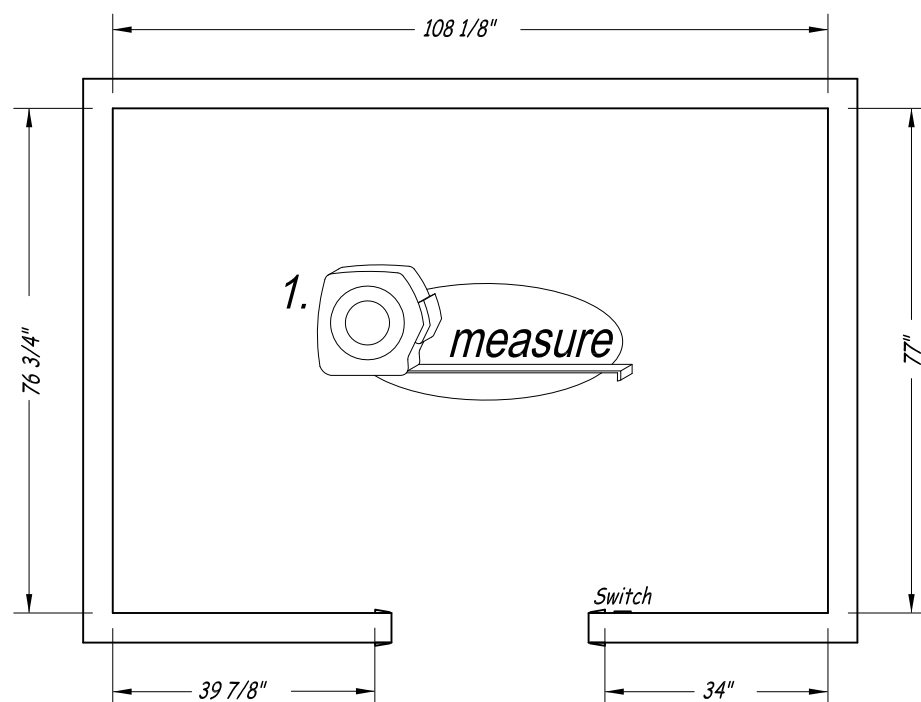


Closet Essentials Design Guide

Designing Your Closet is Simple.

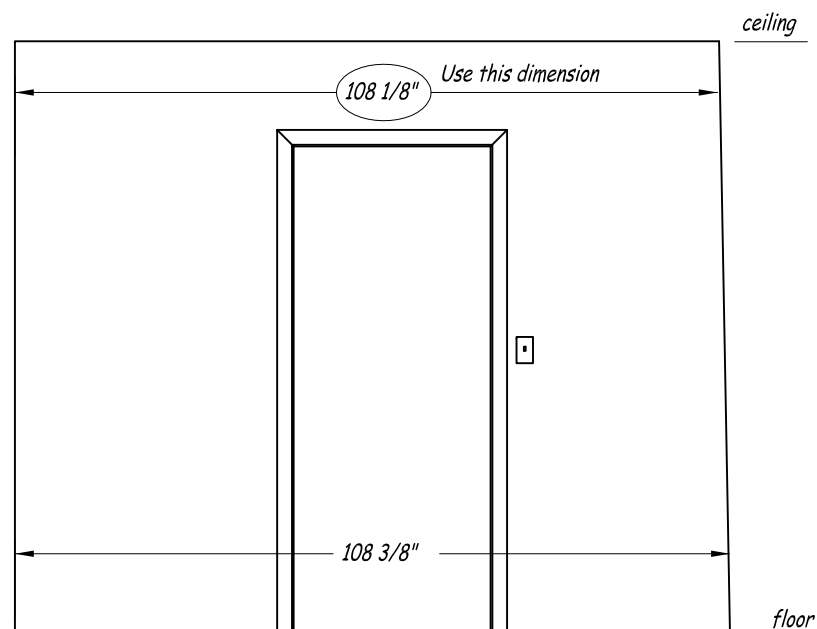
Careful planning is key in designing your dream closet. Please note all of the suggestions on this page before ordering your closet system components.

Closet sizes vary and not one layout fits all, so it is important to plan it out thoroughly. Please review the example layout below:



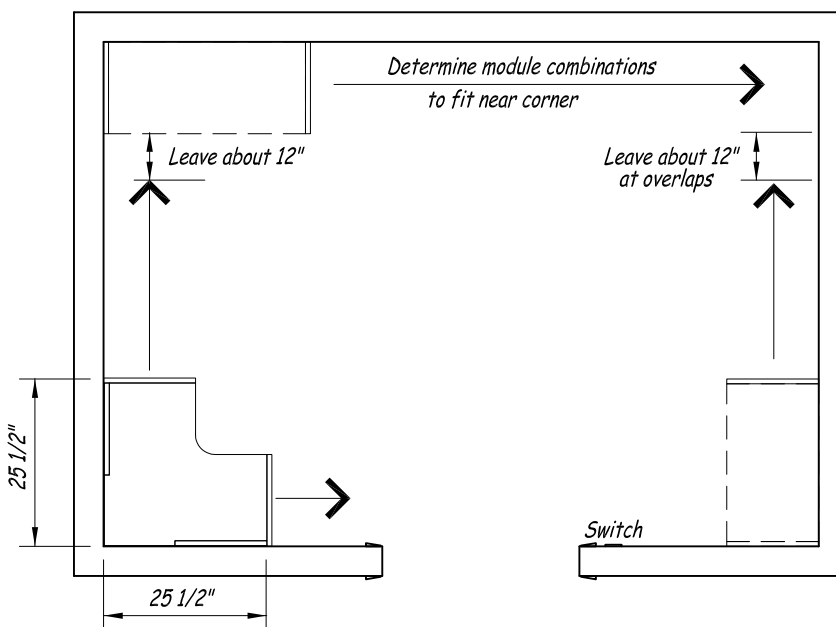
Carefully measure all of the walls and openings around the room. Measure and note all of the items such as light switches, electrical outlets and door casing that must be worked around.

If there is base molding around the closet, it may need to be removed in areas where the closet system sections will be against the wall. The base molding may need to be field cut and re-installed.



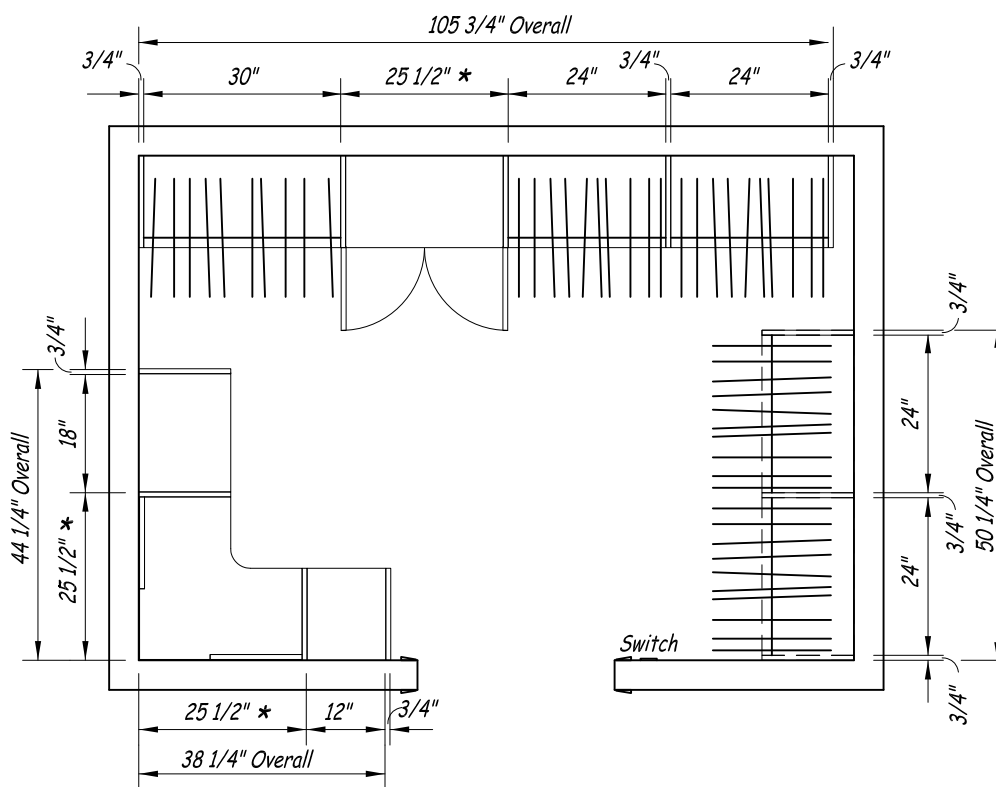
Some walls may be out of plumb or out of square. Be sure to check for such conditions as it may affect your closet system installation. Check room dimensions higher up on the walls in addition to at the floor. Use the smaller of the dimensions.

2. design



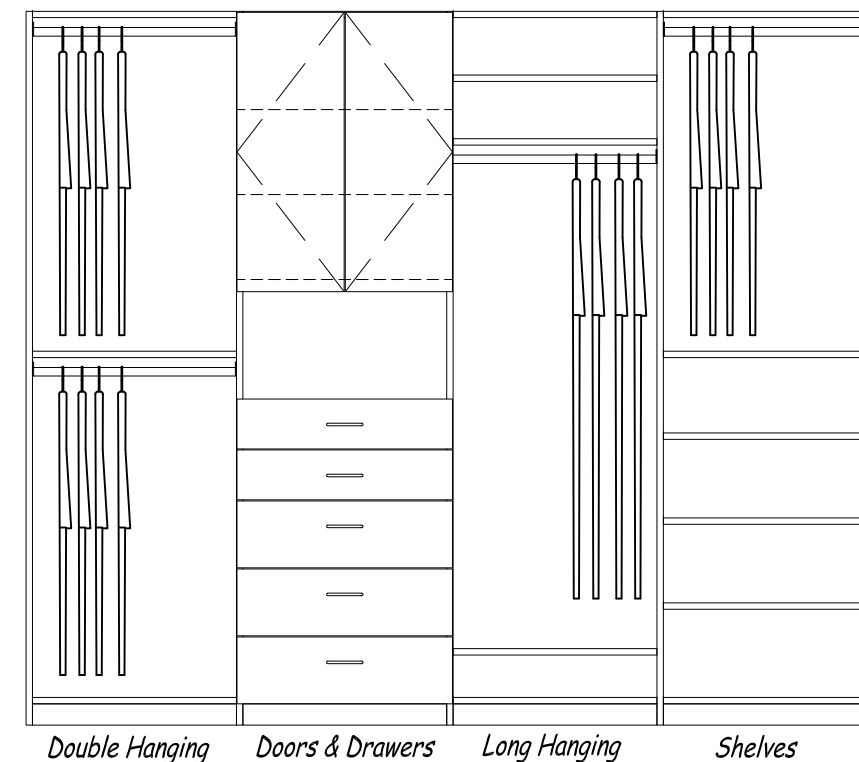
It is easiest to start your layout from the corners and work outward with combinations of sizes that will come close to reaching the adjacent walls without touching them.

Do not plan on using corner units on all corners as room sizes vary and most likely the distance from corner to corner will not equal the length of the closet system units.



* When using Corner Units or Door/Drawer Units please note that those sections include end panels and can share those panels with neighboring sections. Remember to add in all other panel thicknesses for other sections as shown on the example above.

3. accessorize



Choosing the accessories for the system is entirely up to your individual needs. Most closets need plenty of hanging space which includes both double level hanging as well as long hanging. Adjustable shelves are very useful for folded sweaters, jeans and shoes.

Simply determine on your layout sketch where you want each type of accessories to go.

Be sure to check the Closet Essentials Components for available sizes of accessories. Here are some useful sizes to keep in mind when designing your closet:

Panel: 14"D. x 84"H. x 3/4" thick

Rod Lengths: 18", 24", 30" or 36"

Shelf Lengths: 12", 18", 24", 30" or 36"

Door/Drawer Units (includes panels) 25 1/2" overall

Corner Units (includes panels) 25 1/2" overall x 25 1/2" overall

Remember, thoroughly measuring and planning out your closet space will help you achieve the organized closet of your dreams.