

Closet Essentials



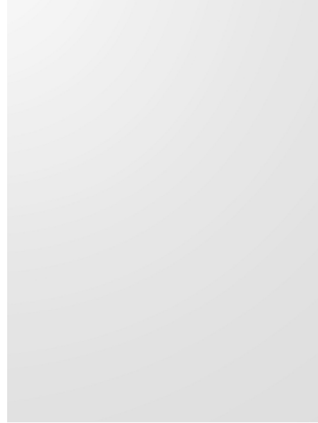
Product of  **EUROWOOD**
Cabinets INC.

Door and Drawer Style and Color Selection

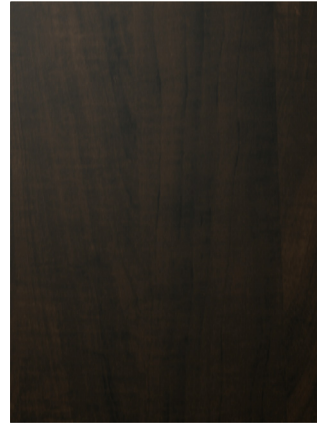
Panel and Slab Type Door & Drawer Front Finishes:



Sunset Applewood



Glacier White

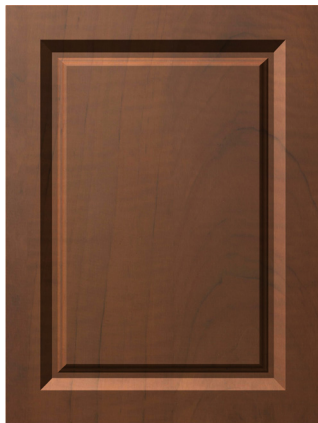


Chocolate Pearwood

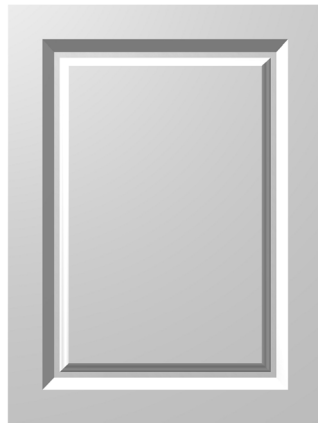


Hard Rock Maple

Raised Panel Door and Drawer Front Upgrades



Sunset Applewood



Glacier White

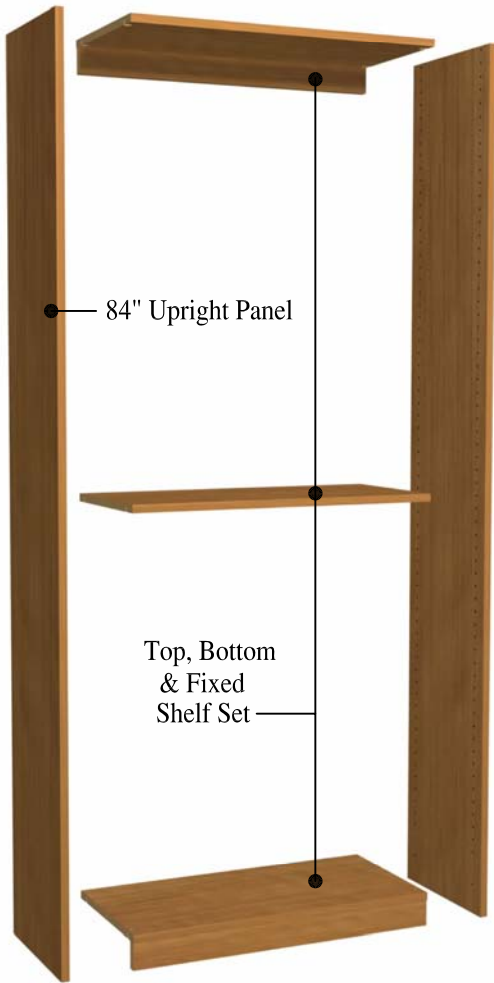


Chocolate Pearwood



Hard Rock Maple

Essentials



84" Upright Panel

84"H. X 14"D. x 3/4" thick panel with holes on one side or 2 sides.

Part No.

Holes 1 side = UP1

Holes 2 sides = UP2

Top, Bottom & Fixed Shelf Set

14"D. X 12, 18, 24, 30 or 36" wide.

Part No.

TBFS12

TBFS18

TBFS24

TBFS30

TBFS36

Accessories



Chrome Rail

12, 18, 24, 30 or 36" wide.

Part No.

CR18

CR24

CR30

CR36

Adjustable Shelves (2 pack)

14"D. X 12, 18, 24, 30 or 36" wide.

Part No.

SHELF12

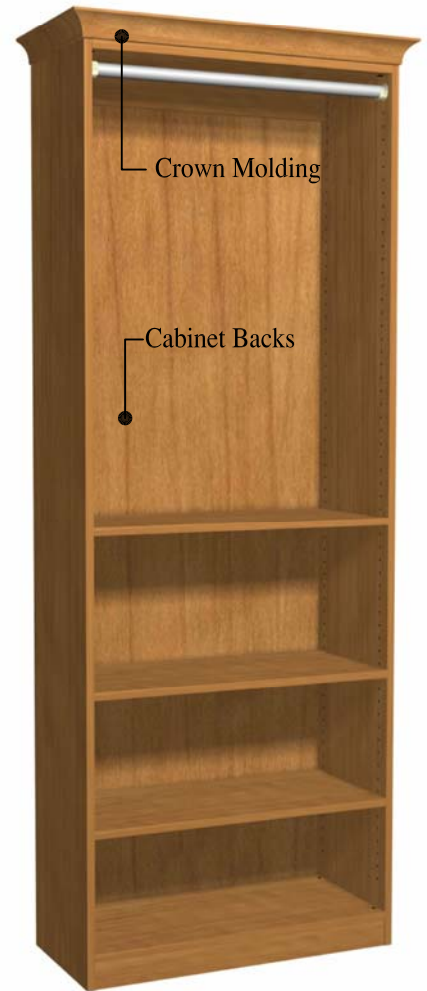
SHELF18

SHELF24

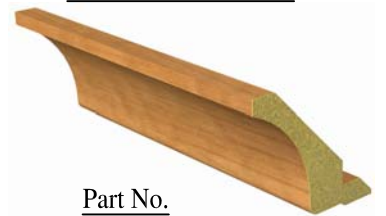
SHELF30

SHELF36

Accents



Crown Molding



Part No.

CM96

96" Lengths. Field cut and miter as needed

Cabinet Backs

77"H. X 12, 18, 24, 30 or 36" wide.

Part No.

CB12

CB18

CB24

CB30

CB36

Corner Tower Assembly

Nominal 24" x 24"
(25 1/2" x 25 1/2" Overall)



84"H.

14"

14"

Part No.
CORNER2424

Included with this unit:

- (1) Fixed Top and Bottom
- (1) Fixed Shelf
- (2) Adjustable Shelves
- (4) Upright Panels

Note: This unit ships knock down

Additional Corner Shelves (2 pack)

Part No.
C-SHELF2424

14"D. Door/Drawer

24" Wide Shelves (25 1/2" overall)
84"H.



14"

Part No.
DR2414

Included with this unit:

- (2) Upright Panels
- (2) 6"H. Drawers
- (3) 8"H. Drawers
- (1) Fixed Top, Bottom & Center
- (1) Pair of Doors
- (3) Adjustable Shelves

Standard Slab Type Door and Drawer Fronts
with White Metal Drawer Box Construction

Note: This unit ships knocked down



Upgrade to Raised Panel Doors
and Drawer Fronts

18"D. Door/Drawer

24" Wide Shelves (25 1/2" overall)
90"H.



18"

Part No.
DR2418

Included with this unit:

- (2) Upright Panels
- (2) 6"H. Drawers
- (3) 8"H. Drawers
- (1) Fixed Top, Bottom & Center
- (1) Pair of Doors
- (3) Adjustable Shelves

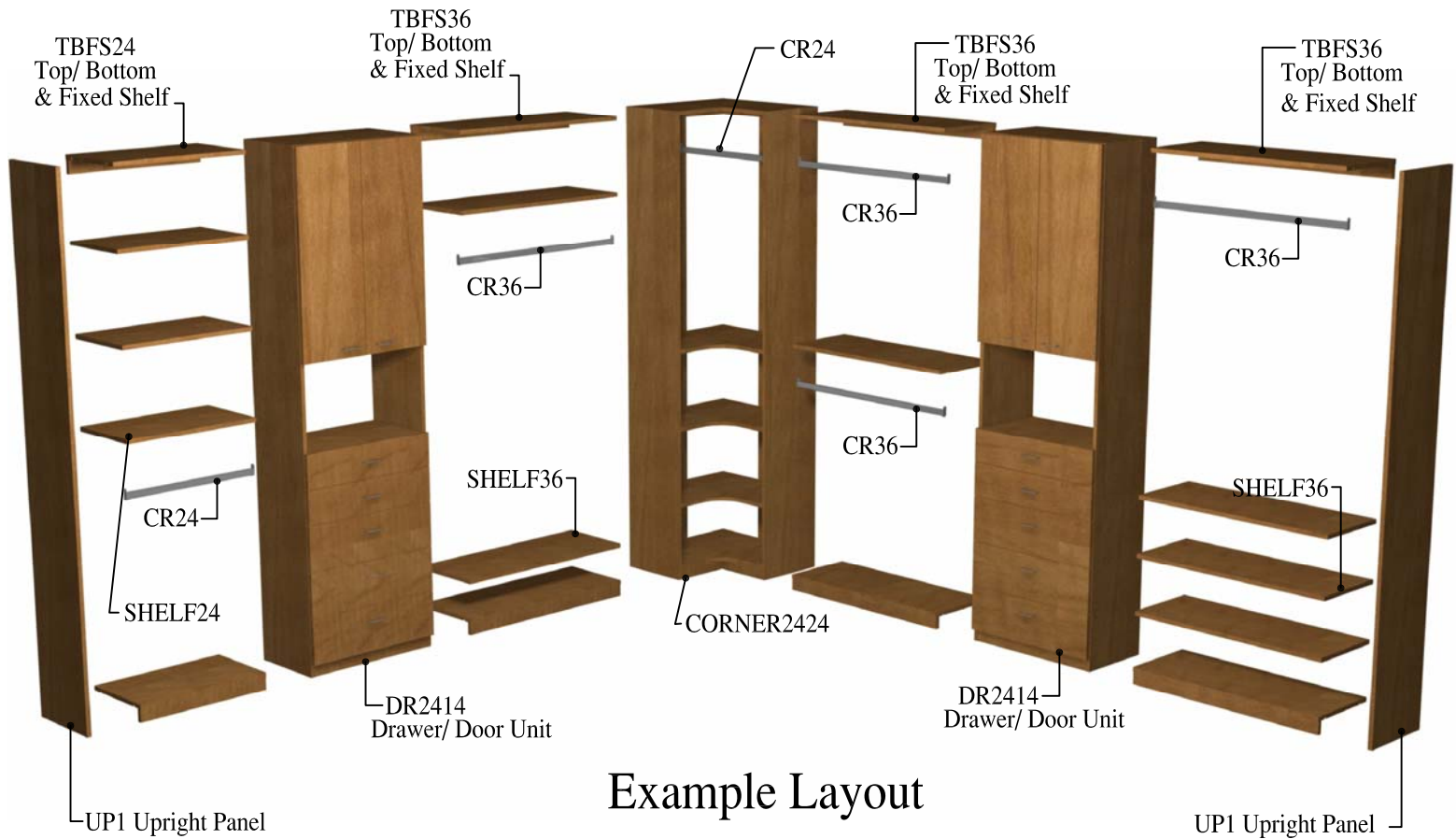
Standard Slab Type Door and Drawer Fronts
with Matching Drawer Box Construction

Note: This unit ships knocked down



Upgrade to Raised Panel Doors
and Drawer Fronts

Planning and Ordering is Simple



Example Layout

Simple Installation to Make Your Life Easier



Connect Panels and Fixed Shelves together.



Secure plumb and level sections to wall.



Add shelves, rods and accessories and enjoy!

Product of  **EUROWOOD**
Cabinets Inc.